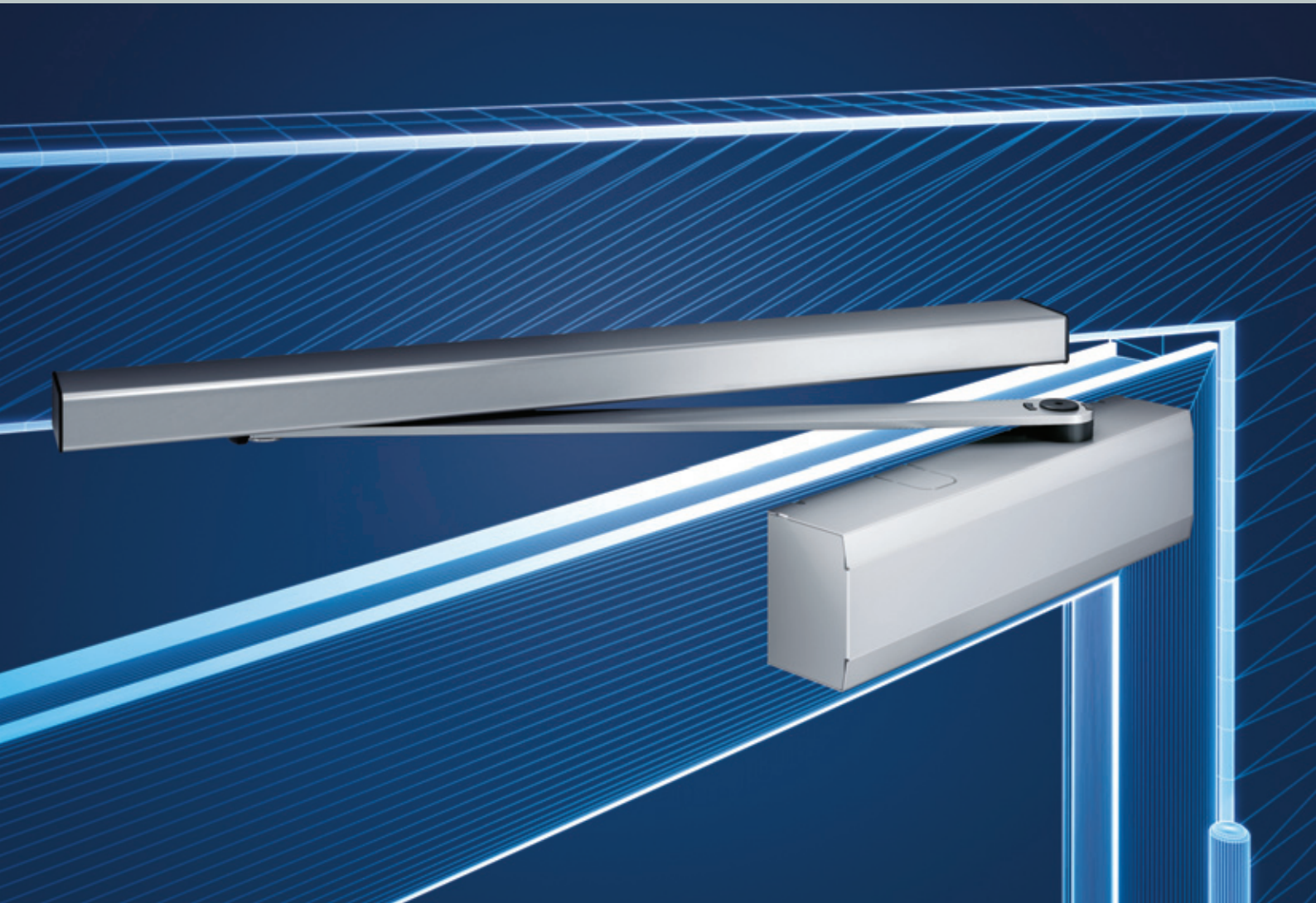




WINDOW TECHNOLOGY
DOOR TECHNOLOGY
AUTOMATIC ENTRANCE SYSTEMS
BUILDING MANAGEMENT SYSTEMS



DOOR TECHNOLOGY

Door closers with slide arm The new OTS 73x series

Securing technology for you



Securing technology for you

Attractive design and very convenient access, installation flexibility and standard-compliant safety: door closers are only truly efficient if they meet all requirements. You can rely on the Gretsch-Unitas Group for this: as one of the international market leaders for window and door technology and automatic entry and building management systems, we are the competent partner for intelligent door closer solutions – from the individual product to an individually coordinated system. The foundation for this is the 100 year old tradition of our family-owned company, which has stood for innovation, progress and cost-effectiveness from the start. With the new OTS 73x series, we thus offer a technically advanced solution that pays off from planning to installation through to daily operation. In order to live up to the expectations of our principle "Securing technology for you" we aim to combine first-rate products with first-rate services.

- Convenience and design – As simple as that 4
- A system for all applications? It works! 8
- Perfect function is simply a question of adjustment 12
- OTS 73x surface-mounted overhead door closers 18
- OTS 735 FL and OTS 736 FL
surface-mounted overhead door closers with freewheel 20
- VTS 735 concealed door closer..... 22
- Accessories 24
- All solutions at a glance 26
- Installation situations 28
- Systematic service 30

Supplement: Overview of modular components

Copyright notice

© All illustrations and texts in this publication are protected by copyright. Unless otherwise stated in the image credits, the rights belong to the Gretsch-Unitas Group. Any use of copyright protected materials without the consent of the holder of the rights is prohibited.

Image credits

Pages 4/5 Personal image: Little girl running provided courtesy of Getty Images

Publisher

Gretsch-Unitas GmbH | Baubeschläge
 Johann-Maus-Str. 3 | D-71254 Ditzingen
 Tel. + 49 (0) 71 56 3 01-0 | Fax + 49 (0) 71 56 3 01-2 93
 www.g-u.com

Securing technology for you



Convenience and design – As simple as that.

Whether for fire protection, barrier-free construction or burglar protection: the use of overhead door closers to automatically close doors plays an important role in public and private buildings. All the better if one can invest in the most compact solution, ensuring convenience and barrier freedom: as the smallest of their type, closers with slide arms from the new OTS 73x series combine attractive design with simple opening – in accordance with the DIN SPEC 1104 and DIN 18040 standards for barrier-free construction.





A high level of convenience meets slim lines: the new OTS 73x series

The comprehensive product range of the new OTS 73x series sets standards for attractive design and very convenient access: with more compact dimensions and an elegant appearance, the new generation of the proven closer with side arm also maintains its easy and convenient operation.

At only 63 mm high, 44 mm deep and 268 mm long, the closing bodies of the new OTS 73x series are currently the smallest on the market. Dimensions, drilling patterns and appearance are uniform across all product types so that a harmonious overall picture is created, even if different door closers are used. The only exception to this is the variant with freewheel. Its dimensions deviate slightly.

The visually attractive, closed surface of the OTS 73x series leaves nothing to be desired: the elegant slide rail cover and robust cover, which is used in place of a slider, ensure this. The cover and the slide arm are available in different materials and finishes and can thus be selected to fit the door and the surrounding architecture. The covered and concealed mounting plate places the finishing touch on this attractive design.

For the highest demands on design and functionality, the new OTS 73x series also offers the VTS 735 concealed door closer: thanks to concealed mounting in the door leaf, the door closer and slide rail remain hidden when the door is closed.

The promise of quality made by the door closer's appearance is kept with clever technology: integrated double-heart curve technology and the optional freewheel function ensure very convenient access.

Advantages at a glance

- Comparatively the smallest closing body on the market: in an elegant, slim design
- Robust cover instead of a slider: available in different materials and finishes
- Concealed mounting plate: for a high-quality, sleek appearance
- Uniform dimensions throughout nearly the entire range of door closers: for a harmonious overall effect in the project
- Uniform drilling pattern for all door closer types



A system for all applications? It works!

As different as the functions of doors may be, the opportunities to use overhead door closers are just as diverse. The new OTS 73x series covers all applications with its innovative modular system: the components are simply combined to meet requirements and adjusted individually. This not only makes planning, installation and retrofitting easier: it also saves storage space and fixing accessories.





The right solution for any application

School, hotel or airport? Single- or double-leaf door? Installation on the hinge side or the side opposite to hinges? Transom or standard installation? Each door closer is an individual answer to specific building situations and door variants. The innovative modular system of the new OTS 73x series completely covers these requirements and thus makes planning and installation easier for all applications.

The possible uses range from simple door closing to fire protection all the way through to barrier freedom. In addition, the modular system enables quick retrofitting and easy expansion of functions for special solutions.

The new OTS 73x series makes it possible with components that are universally suitable for all applications and mounting variants: slide rail and slide arm, the symmetrical mounting plate and the axle extension are identical for all variants. Without being dismantled, they can be flexibly expanded with additional components – for example, with a mechanical or electro-mechanical hold-open device, door leaf coordinator, opening restrictor and smoke switch module.

The advantage is obvious: those who have components that are exactly matched for all requirements need fewer different components in storage and fewer fixing accessories – for more efficiency and cost-effectiveness.

Advantages at a glance

- One slide rail, one slide arm and one axle extension for all application and installation types
- Uniform mounting plate in accordance with EN 1154 for all application and installation types
- Uniform installation drilling pattern for all variants prevents confusion
- Fixing cam on the mounting plate for secure, fast installation and steady fixing
- All types of hold-open devices (mechanical and electromechanical) can be opened beyond the hold-open angle

Choose the right solution for you from our modular system

Single-leaf solutions

Optional: ③ AD-GS
 ② GS
 ① OTS 73x ⑩ MP

Standard

Optional: ③ AD-GS
 ④ FM ② GS
 ① OTS 73x ⑩ MP

With mechanical hold-open device

⑥ AD-GS-FE
 ⑤ FE ② GS
 ① OTS 73x ⑩ MP

With electromechanical hold-open device

⑥ AD-GS-FE
 ⑤ FE ② GS ⑨ RSM
 ① OTS 73x ⑩ MP

With electromechanical hold-open device and smoke switch module

Double-leaf solutions with SRI door leaf coordinator

③ AD-GS ⑧ AD-SRI ③ AD-GS
 ② GS ⑦ SRI ② GS
 ① OTS 73x ⑩ MP ⑩ MP ① OTS 73x

Standard

③ AD-GS ⑧ AD-SRI ③ AD-GS
 ④ FM ② GS ⑦ SRI ② GS ④ FM
 ① OTS 73x ⑩ MP ⑩ MP ① OTS 73x

With mechanical hold-open device

⑥ AD-GS-FE ⑧ AD-SRI ⑥ AD-GS-FE
 ⑤ FE ② GS ⑦ SRI ② GS ⑤ FE
 ① OTS 73x ⑩ MP ⑩ MP ① OTS 73x

With electromechanical hold-open device

⑥ AD-GS-FE ⑧ AD-SRI ⑨ RSM ⑥ AD-GS-FE
 ⑤ FE ② GS ⑦ SRI ② GS ⑤ FE
 ① OTS 73x ⑩ MP ⑩ MP ① OTS 73x

With electromechanical hold-open device and smoke switch module

One slide rail for all applications



1-leaf – OTS 73x



2-leaf – OTS 73x SRI



Standard installation on hinge side



Standard installation on side opposite to hinges

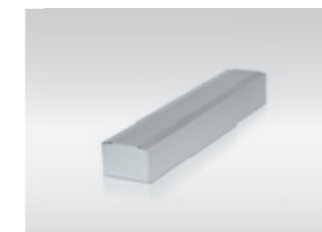


Transom installation on hinge side



Transom installation on side opposite to hinges

The modular system



1A Cover

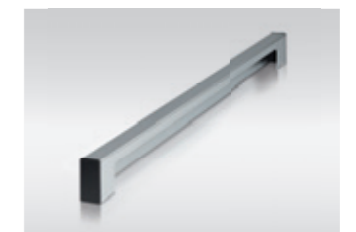


1 OTS 73x / OTS 73x BG door closer

1BS OTS 73x closer body
 1BG OTS 73x BG closer body



2 GS slide rail (with slide arm)



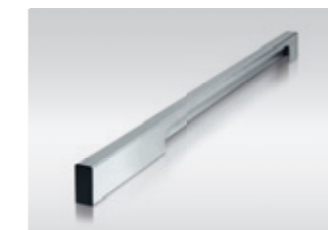
3 AD-GS slide rail cover



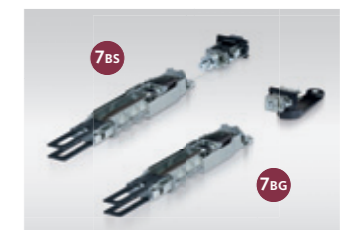
4 FM mechanical hold-open device with ÖB opening restrictor



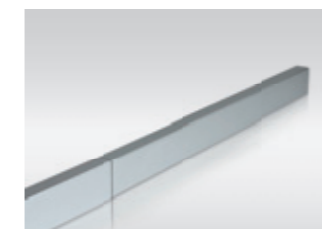
5 FE electromechanical hold-open device



6 AD-GS-FE cover for electromechanical hold-open device



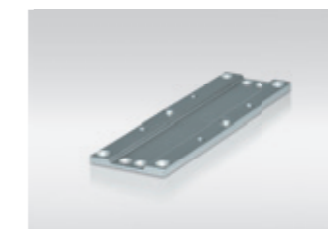
7 SRI door leaf coordinator
 7BS SRI 7BG SRI-BG



8 AD-SRI cover for door leaf coordinator



9 RSM smoke switch module



10 MP mounting plate



11 ÖB Opening restrictor

BS = hinge side / BG = side opposite to hinges

Perfect function is simply a question of adjustment.

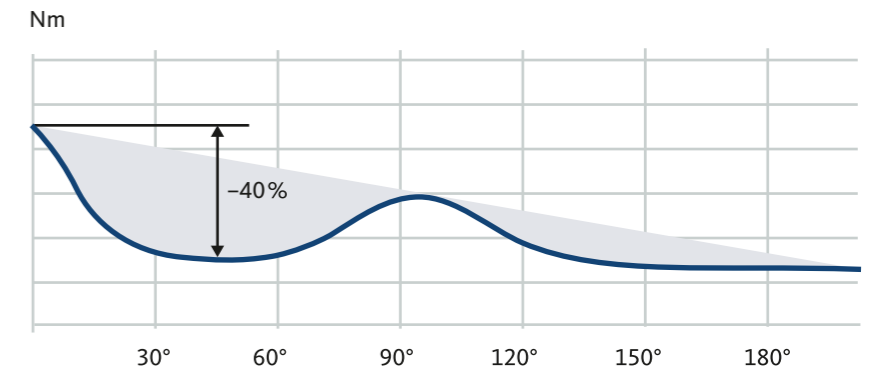
How does one recognise a perfectly functioning door? When one barely perceives it while walking through. The new OTS 73x series ensures this with innovative double-heart curve technology – and sets standards for easily controlled opening and closing movement. Thanks to steplessly adjustable control valves and adjustment of the closing force, the convenience and function of the overhead door closer can be easily adjusted. So, for example, the entire closing force range (EN min. to EN max.) can be easily controlled using nine turns.





Barrier-free convenience thanks to intelligent use of force

The patent-pending double-heart curve technology of the new OTS 73x series enables extremely easy and convenient passage through the door. This enables it to fulfil the DIN SPEC 1104 (CEN/TR 15894) requirements, which prescribe reduction of the opening force by 40% at an opening angle of 2° to 60°. This also enables effortless passage through large doors for children, the elderly and people with restricted mobility.



The strongly decreasing force at a door opening angle of 2° to 60° makes opening easier

For controlled opening and closing

The closing movement can be controlled and regulated individually in all product variants of the OTS 73x series: this is ensured by the precise closing force display and convenient closing force adjustment, among other things.

With the colour-coded, robust control valves made entirely of metal, closing speed, latching speed and backcheck can also be individually adjusted to the building situation and the needs of users.

Advantages at a glance

- Patent-pending double-heart curve technology for maximum convenience
- Opening and closing movement can be precisely controlled
- Colour-coded control valves prevent confusion during adjustment



1 Closing force adjustment

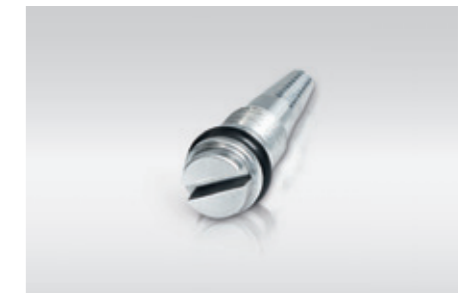
2 Closing force display

For convenient closing force adjustment with only nine turns (EN min. up to EN max.) and visible display of the adjusted closing force.



3 Double-heart curve technology

Ensures optimum function of the closing shaft for smooth opening.



Control valves

4 Closing speed

5 Latching speed

6 Backcheck

Steplessly adjustable and colour-coded – for convenient and confusion-free adjustment.

All expectations incorporated.

Whether surface mounted, with freewheel or concealed: with one holistic product range, the new generation of OTS 73x series closers with slide arm cover the most varied application areas and expectations. You can always rely on standard-compliant safety – no matter which door closer variant is used.



OTS 73x overhead door closers



OTS 735 FL and OTS 736 FL overhead door closers with freewheel

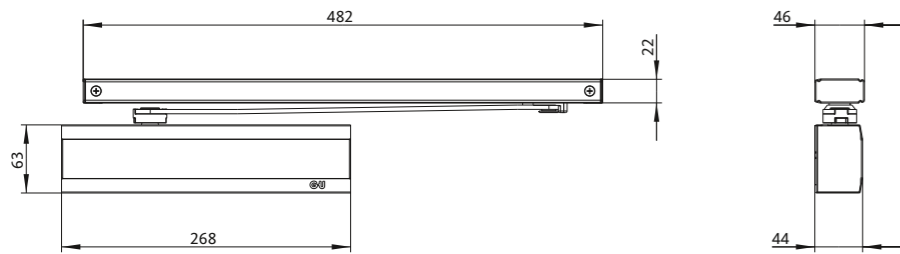


VTS 735 concealed door closer





Thanks to simple installation and high functional safety, surface-mounted OTS overhead door closers can be installed on the hinge side or the side opposite to hinges. They are also suitable for use on double-leaf doors thanks to an integrated door leaf coordinator hidden in the slide rail to ensure the correct closing sequence of the active and passive leaf.



Product features

Door closer

- Tested according to EN 1154
- With double-heart curve technology. This ensures DIN SPEC 1104 conformity and suitability for barrier-free construction according to DIN 18040
- Smallest dimensions (L x H x D): 268 x 63 x 44 mm for all variants, including cover
- Valve functions
 - Closing speed
 - Latching speed
 - Backcheck
- With closing force display
- Simple and safe adjustment of closing force with just a few turns of the adjustment screw (max. 9 turns EN min. up to EN max.)
- Cover in an attractive design; available in various materials and finishes
- Cover with safeguard
- Max. door opening and closing angle 180°
- Large opening angle during installation of the side opposite to hinges thanks to its own BG door closer version

Application range

- Suitable for fire and smoke protection doors
- For swing doors up to 1400 mm (1-leaf) or 2800 mm (2-leaf)
- DIN left and DIN right usable
- Hinge side and side opposite to hinges
- Standard and transom installation

Slide rail

- One slide rail for all application and installation types (modular system)
 - For hinge side and side opposite to hinges
 - For standard and transom installation
- Slide rail installation height
 - Standard (without cover): 22 mm
 - Standard (with cover): 25 mm
- With integrated cable channel for electromechanical hold-open device (FE)
- Fast and uncomplicated extension with further components

Mechanical hold-open device (FM)^[1]

- Steplessly adjustable from 80° – 140°

Electromechanical hold-open device (FE)

- Steplessly adjustable from 85° – 140°
- 2 different hold-open areas can be preset at the same time

Door leaf coordinator (SRI)

- SRI waiting position with load-limiting device; prevents damages in case of mishandling
- With microswitch in conjunction with the electromechanical hold-open device: if the active leaf is manually tripped, the passive leaf is also automatically closed

Mounting plate

- Symmetrical mounting plate for all door closer types and mounting variants

Opening restrictor

- Steplessly adjustable limit angle up to 120°

Overview of variants

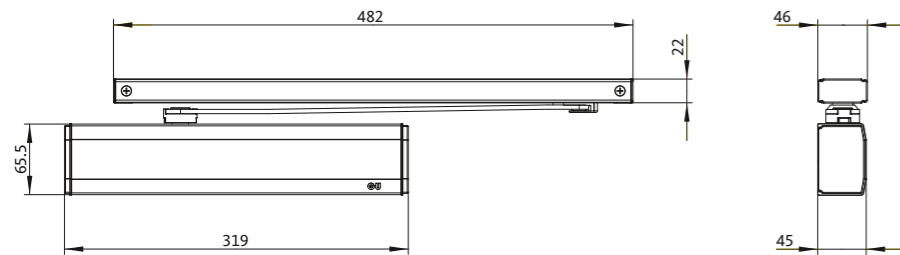
Type designation	OTS 733	OTS 733 BG	OTS 735	OTS 735 BG	OTS 736	OTS 736 BG
Assembly	Hinge side	Side opposite to hinges	Hinge side	Side opposite to hinges	Hinge side	Side opposite to hinges
Closing force size according to EN 1154	3	3	2 – 5	2 – 5	3 – 6	3 – 6

[1] Not approved for smoke and fire protection doors





The surface-mounted OTS 735 FL and OTS 736 FL overhead door closers enable the user to easily access a fire protection door. The integrated electrical freewheel function, which can be activated from 0°, allows the door freedom of movement, as if no door closer were installed. Safe and reliable door locking is still provided in the event of a fire. This makes them particularly suitable for use on fire protection doors in nursery schools, schools and retirement homes – standard-compliant for barrier-free construction in accordance with DIN 18040 or DIN SPEC 1104.



Product features

Door closer

- Tested according to EN 1155
- With electrically integrated freewheel function, can be activated from 0°
- Accessibility of a door up to 1400 mm (1-leaf), without exertion of force in both directions, as if no door closer were installed
- Secure and automatic closing in the event of a fire, making it ideal for installation on 1- and 2-leaf fire and smoke protection doors
- Smallest dimensions (L x H x D): 319 x 65.5 x 45 mm, incl. cover
- Valve functions
 - Closing speed
 - Latch action
- Max. door opening and closing angle 180°
- No special components: all components of the modular system can be used
- Uniform drilling pattern in all door closers of the OTS 73x series

Application range

- Suitable for fire and smoke protection doors
- For swing doors up to 1400 mm (1-leaf) or 2800 mm (2-leaf)
- DIN left and DIN right usable
- Hinge side and side opposite to hinges
- Standard and transom installation

Slide rail

- One slide rail for all application and installation types (modular system)
 - For hinge side and side opposite to hinges
 - For standard and transom installation
- Slide rail installation height
 - Standard (without cover): 22 mm
 - Standard (with cover): 25 mm
- Fast and uncomplicated extension with further components

Door leaf coordinator (SRI)

- SRI waiting position with load-limiting device; prevents damages in case of mishandling

Mounting plate

- Symmetrical mounting plate for all door closer types and mounting variants

Opening restrictor

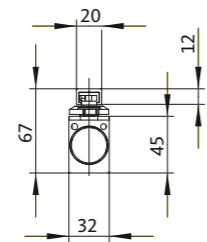
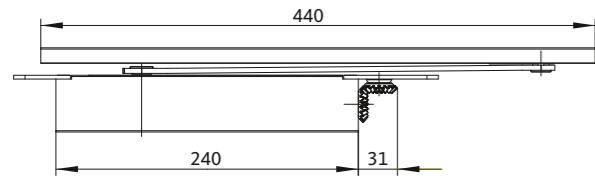
- Steplessly adjustable limit angle up to 120°

Overview of variants

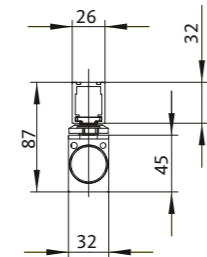
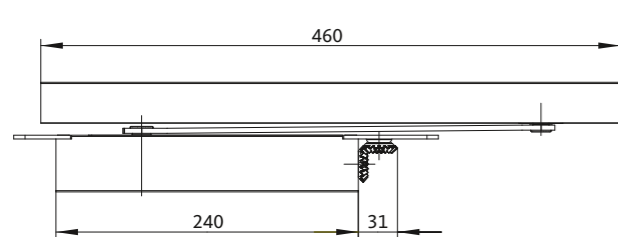
Type designation	OTS 735 FL	OTS 735 FL BG	OTS 736 FL	OTS 736 FL BG
Assembly	Hinge side	Side opposite to hinges	Hinge side	Side opposite to hinges
Closing force size according to EN 1154	5	5	6	6



The VTS 735 concealed door closer for single- and double-leaf doors is installed concealed in the door leaf and door frame. Closer and slide rail are not visible when the door is closed. VTS thus meets the highest expectations in terms of function and design.



VTS 735 concealed door closer – with standard slide rail



VTS 735 concealed door closer – with functional slide rail (for SRI door leaf coordinator and FE electromechanical hold-open device)

Product features

Door closer

- Tested according to EN 1154
- With heart curve technology, thus in compliance with DIN SPEC 1104 and suitable for barrier-free construction according to DIN 18040
- Smallest dimensions (L x H x D): 240 x 45 x 32 mm
- Valve functions
 - Closing speed
 - Latch action
 - Backcheck
- For door leaf thicknesses of 40 mm or more
- Max. door opening and closing angle 120° (depending on door construction)
- Closing force size: EN 3 – 5, easily and steplessly adjustable
- Easy and safe closing force adjustment with just a few turns of the adjustment screw (max. 9 turns EN min. up to EN max.)

Application range

- Suitable for fire and smoke protection doors
- For swing doors up to 1250 mm (1-leaf) or 2500 mm (2-leaf)
- DIN right and DIN left usable
- Suitable for all rebate clearance heights up to 22 mm.

Slide rail

- Standard slide rail: 20 x 12 mm
- Functional slide rail: 26 x 32 mm for
 - Electromechanical hold-open device (FE)
 - Integrated door leaf coordinator (SRI)

Mechanical hold-open device (FM)^[1]

- Retrofittable and can be integrated in the standard slide rail as an option
- Hold-open angle steplessly adjustable from approx. 80°

Electromechanical hold-open device (FE)

- Steplessly adjustable from 80°

Opening restrictor

- Steplessly adjustable limiting angle up to max. 120°

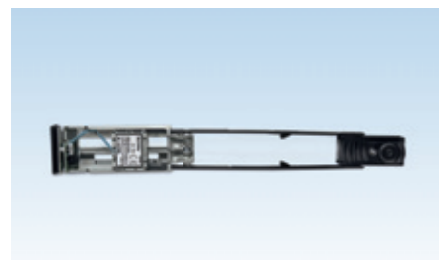
[1] Not approved for smoke and fire protection doors





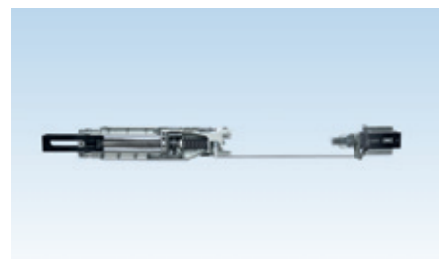
Mechanical hold-open device (FM) with opening restrictor (ÖB)

- Can be integrated in the slide rail
- Retrofittable
- With integrated opening restrictor
- On-/Off-switchable override function
- Steplessly adjustable from 80° – 140°



Electromechanical hold-open device (FE)

- Retrofittable and can be extended laterally on the slide rail
- Can be fully opened beyond hold-open angle up to 180°
- With its own cover
- Steplessly adjustable from 85° – 140°



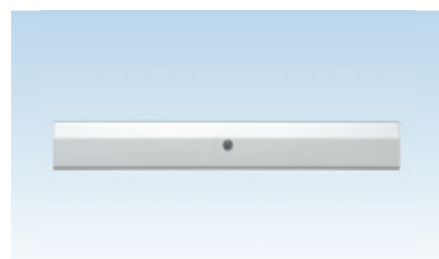
Door leaf coordinator (SRI)

- Can be integrated in the slide rail
- SRI waiting position with load-limiting device
- Optional: with integrated microswitch for conjunction with the FE electromechanical hold-open device



Opening restrictor (ÖB)

- Can be integrated in the slide rail
- Retrofittable
- Steplessly adjustable limiting angle up to 180°



Smoke switch module (RSM)

- With integrated power supply and release mechanism
- With integrated fire detector
- For electrical power supply of the connected electromechanical hold-open device and fire detector
- Cover in a new design, in the same look as the OTS 73x cover
- Installation height: 36 mm



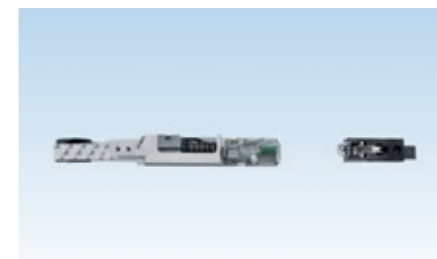
Mechanical hold-open device (FM)

- Can be integrated in the standard slide rail (20 x 12 mm)
- Retrofittable
- Steplessly adjustable from 80°



Electromechanical hold-open device (FE)

- Retrofittable and can be extended laterally on the functional slide rail (26 x 32 mm)
- Complete opening beyond hold-open angle possible
- Steplessly adjustable from 80°



Door leaf coordinator (SRI)

- Can be integrated in the functional slide rail (26 x 32 mm)
- SRI waiting position with load-limiting device
- Optional: with integrated microswitch for conjunction with the FE electromechanical hold-open device



Opening restrictor (ÖB)

- Can be integrated in the standard slide rail (20 x 12 mm)
- Retrofittable
- Steplessly adjustable limit angle up to 120°



Smoke switch module (RSM)

- With integrated power supply and release mechanism
- With integrated fire detector
- For electrical power supply of the connected electromechanical hold-open device and fire detector
- Installation height: 36 mm



Door closer

Name of the closing body variant	OTS 733	OTS 733 BG	OTS 735	OTS 735 BG	OTS 736
Dimensions (with cover) L x H x D in mm	268 x 63 x 44	268 x 63 x 44	268 x 63 x 44	268 x 63 x 44	268 x 63 x 44
Closing force sizes according to EN 1154	3	3	2 – 5	2 – 5	3 – 6
Application					
1-leaf	■	■	■	■	■
2-leaf	■	■	■	■	■
Standard installation on hinge side	■	-	■	-	■
Transom installation on side opposite to hinges	■	-	■	-	■
Standard installation on side opposite to hinges	-	■	-	■	-
Transom installation on hinge side	-	■	-	■	-
Approval for fire and smoke protection doors					
Max. leaf width (mm) 1-leaf	950	950	1250	1250	1400
Max. leaf width (mm) 2-leaf	1900	1900	2500	2500	2800
Adjustment functions					
Closing speed	■	■	■	■	■
Latch action / latching speed	■	■	■	■	■
Backcheck	-	-	■ ^[1]	-	■ ^[1]
Installation/functions					
Steplessly adjustable closing force	-	-	■	■	■
Freewheel function from 0°	-	-	-	-	-
Max. door opening and closing angle (hinge side / side opposite to hinges) ^[3]	180° / 120°	180° / 120°	180° / 120°	180° / 120°	180° / 120°
Opening restrictor ^[2]	optional	optional	optional	optional	optional
DIN left/right	■	■	■	■	■
Hold-open device (optional)					
FM mechanical hold-open device ^[4] Adjustable hold-open angle	Steplessly 80° – 140° (opening beyond hold-open angle possible)	Steplessly 80° – 120° (opening beyond hold-open angle possible) ^[3]	Steplessly 80° – 140° (opening beyond hold-open angle possible)	Steplessly 80° – 120° (opening beyond hold-open angle possible) ^[3]	Steplessly 80° – 140° (opening beyond hold-open angle possible)
FE electromechanical hold-open device Adjustable hold-open angle	Steplessly 85° – 140° (opening beyond hold-open angle possible)	Steplessly 85° – 120° (opening beyond hold-open angle possible) ^[3]	Steplessly 85° – 140° (opening beyond hold-open angle possible)	Steplessly 85° – 120° (opening beyond hold-open angle possible) ^[3]	Steplessly 85° – 140° (opening beyond hold-open angle possible)

^[1] Not effective for transom installation on the side opposite to hinges

^[3] Depends on the installation situation, BS = hinge side / BG = side opposite to hinges

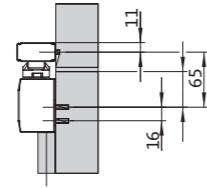
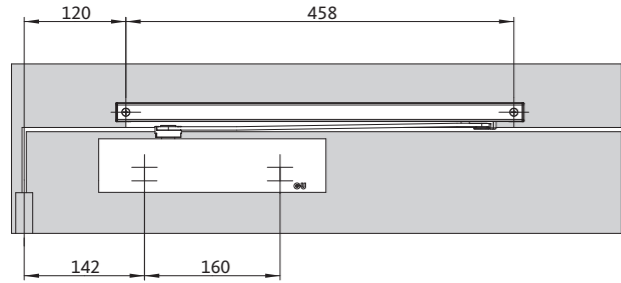
^[2] No replacement for doorstop

^[4] Not approved for smoke and fire protection doors

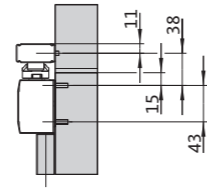
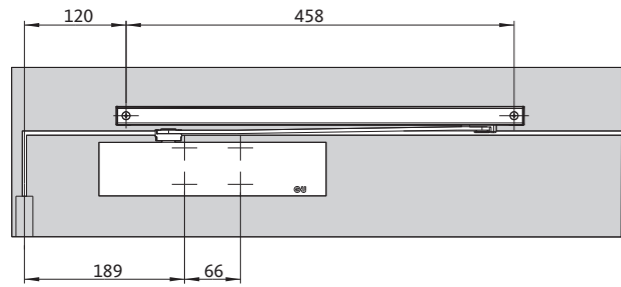
OTS 736 BG	OTS 735 FL	OTS 735 FL BG	OTS 736 FL	OTS 736 FL BG	VTS 735
268 x 63 x 44	319 x 65.5 x 45	319 x 65.5 x 45	319 x 65.5 x 45	319 x 65.5 x 45	240 x 45 x 32
3 – 6	5	5	6	6	3 – 5
■	■	■	■	■	■
■	■	■	■	■	■
-	■	-	■	-	-
-	■	-	■	-	-
■	-	■	-	■	-
■	-	■	-	■	-
1400	1250	1250	1400	1400	1250
2800	2500	2500	2800	2800	2500
■	■	■	■	■	■
■	■	■	■	■	■
-	-	-	-	-	■
■	-	-	-	-	■
-	■	■	■	■	-
180° / 120°	180° / 120°	180° / 120°	180° / 120°	180° / 120°	120°
optional	optional	optional	optional	optional	optional
■	■	■	■	■	■
Steplessly 80° – 120° (opening beyond hold-open angle possible) ^[3]	-	-	-	-	Steplessly from 80°
Steplessly 85° – 120° (opening beyond hold-open angle possible) ^[3]	-	-	-	-	Steplessly from 80°



Standard mounting on hinge side with OTS 73x

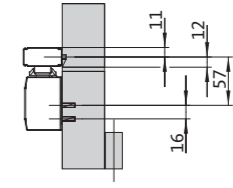
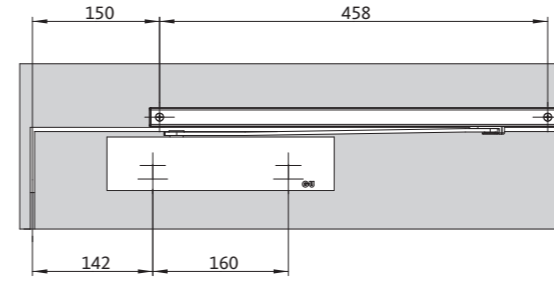


With mounting plate

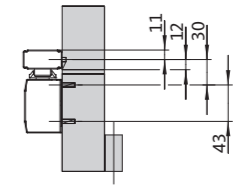
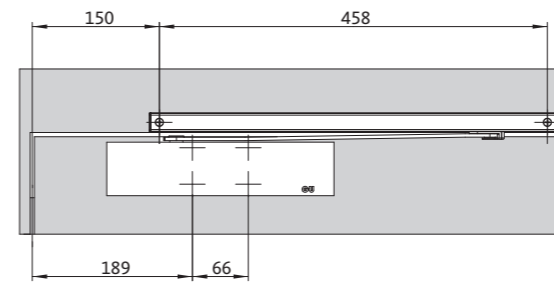


Without mounting plate

Standard installation on side opposite to hinges with OTS 73x BG

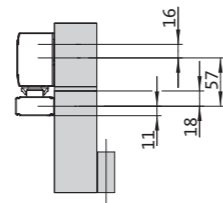
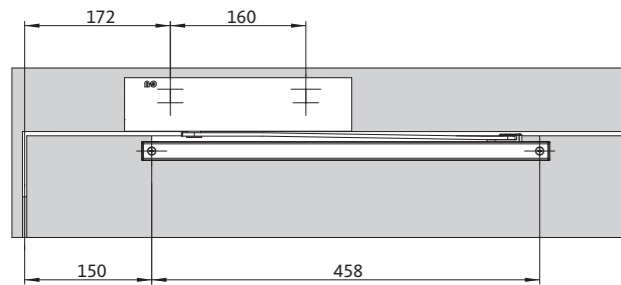


With mounting plate

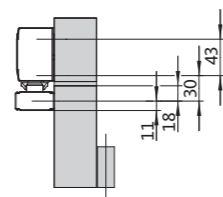
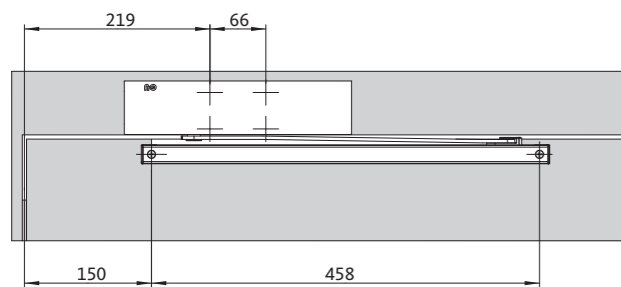


Without mounting plate

Transom installation on the side opposite to hinges with OTS 73x

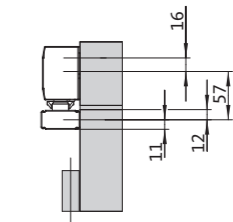
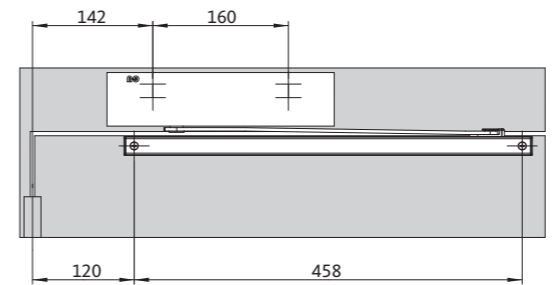


With mounting plate

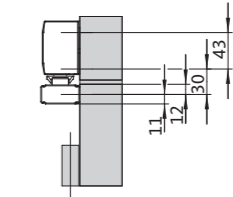
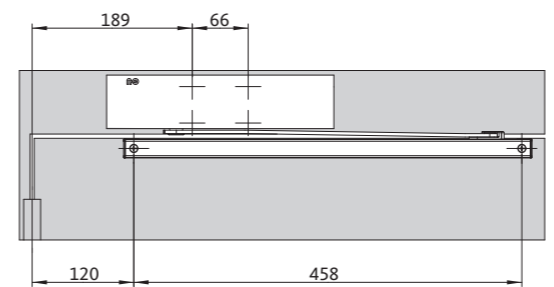


Without mounting plate

Transom installation on hinge side with OTS 73x BG



With mounting plate



Without mounting plate

Systematic Service



Service and maintenance

Competent, individual and on location: when it comes to security areas, fire protection and barrier freedom, the GU Group offers comprehensive support in all project phases. Trained experts with a wide range of knowledge of all relevant standards and regulations provide support for the project from the design planning phase, to mounting and installation, all the way through to regular system maintenance.



Building project consulting

Simplifies everyday work: building project consulting assists architects and planners with project-specific drawings and door schedules, cable diagrams and tender specifications or conceptual designs with functional descriptions, for example. Well thought-out and coordinated system solutions guarantee functionality and compliance with the required standards and directives.



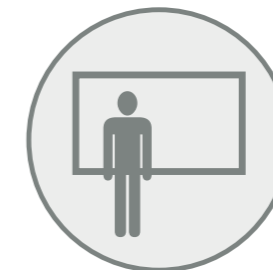
Door engineering

Step by step to the right door solution: with its Door Engineering concept, the GU Group developed an efficient method for configuring individual doors. Cross-trade solutions are prepared based on experimental models. The documentation ensures maximum planning reliability based on clearly laid-out door configuration lists.



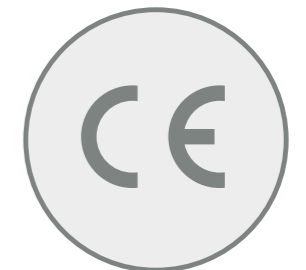
Hotline for architects

For all those with planning questions or who require detailed information on the products of the GU Group: the building project consultants at the hotline for architects provide personal expert advice: by telephone +49 (0)2051/201-2000, e-mail objektberatung@g-u.de or can also be contacted using the form at the company website www.g-u.com



Seminars and training courses

Practical knowledge based on first hand experience: with around 160 events annually GU Group offers an extremely wide range of seminars and training courses. The programme includes product innovations and their applications, current architectural trends and standards and directives. Several seminars and training courses are certified and recognised as advanced training courses by the chamber of architects and civil engineers in Germany.



CE-certified products

Safety in black and white: all overhead door closers in the OTS 73x series are CE-certified. This is how the GU Group gives their customers confirmation that the products meet the requirements of the European Union. In addition, by using CE marking, the GU Group takes responsibility for the fact that the products fulfil all the characteristics defined in the Declaration of Performance.



AusschreibungsManager for tenders

Comprehensive, legally sound and technically up-to-date: with the AusschreibungsManager, GU Group is offering architects and planners a convenient and effective online tool that allows them to effortlessly compile technical specifications and complete tender specifications – for all GU Group products.



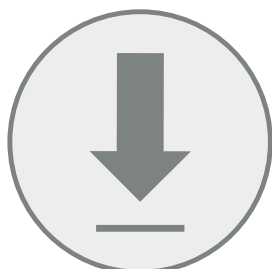
Customer Information System

Available at the click of a mouse: the Customer Information System (CIS) is an ordering and information system for all GU Group products. Customers can use the online platform 24 hours a day 7 days a week to access important information: from preparing a quotation through to performing an availability check in real time, from placing the order to order tracking.



confiGUrator

The right products in the right quantity: the practical confiGUrator is an online platform where parts lists and hardware sets can be precisely determined. Based on the specifications for the particular project, a technically correct parts list is generated within seconds. The data is determined based on current conditions and fundamental technical principles.



Free download

To make planning easier: a wide range of information on the products and applications is available to download from the company website to the local hard drive quickly, conveniently and free of charge: from product documents and installation drawings to Declarations of Performance through to software solutions.



Provision of samples

Impressive not just for builders: quality and functionality are best experienced live on site. The GU Group therefore organises the provision of samples for the project from start to finish and can also present different versions and functions if required. As an alternative, the GU Group offers visits to reference projects worldwide.



Quality in black and white

You can rely on this: virtually all variants of the GU Group's range of door closers are tested and certified to meet the relevant EN 1154, EN 1155 and EN 1158 standards. And all GU Group hold-open systems are approved by the DIBt (an authority of the German state governments for uniform fulfillment of technical tasks).

A product on its own is not a solution. The right security, function and cost-effectiveness can only be achieved with the right planning and by ensuring correct application. The GU Group therefore also applies the systematic thought processes demonstrated in its product range to its service offering. Close interlinking of one-to-one expert advice, free online support and a comprehensive programme of technical seminars aims to make the day-to-day work of customers easier.



WINDOW TECHNOLOGY
DOOR TECHNOLOGY
AUTOMATIC ENTRANCE SYSTEMS
BUILDING MANAGEMENT SYSTEMS

Gretsch-Unitas GmbH
Baubeschlage
Johann-Maus-Str. 3
D-71254 Ditzingen
Tel. + 49 (0) 71 56 3 01-0
Fax + 49 (0) 71 56 3 01-77 980

BKS GmbH
Heidestr. 71
D-42549 Velbert
Tel. + 49 (0) 20 51 2 01-0
Fax + 49 (0) 20 51 2 01-97 33

www.g-u.com

Securing technology for you



The modular series of OTS 73x door closers with slide rail

Hinge side





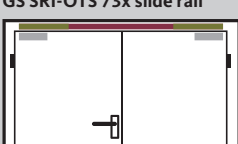
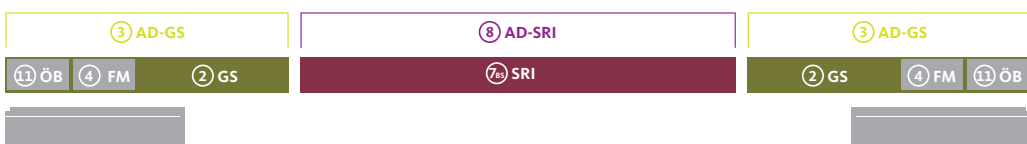
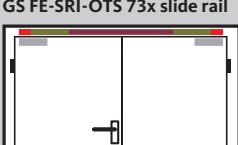
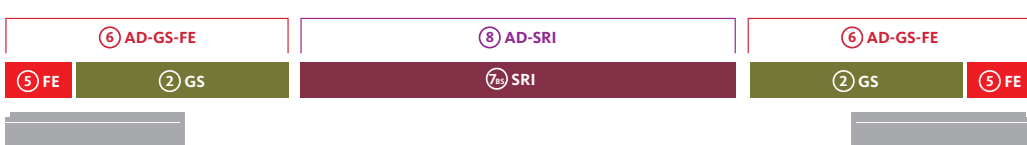
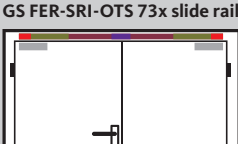
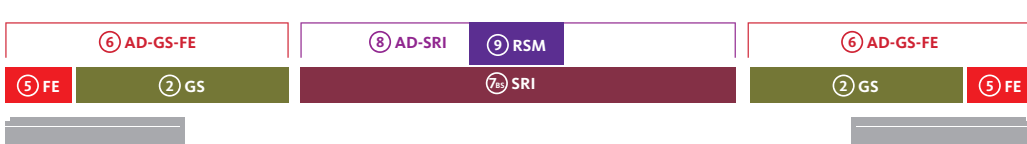
Modular components

					
1A AD-OTS 73x cover Order no. K-18338-00-0-*	1B OTS 73x closer body OTS 733 – Order no. K-18341-00-0-1 OTS 735 – Order no. K-18343-00-0-1 OTS 736 – Order no. K-18345-00-0-1	2 GS slide rail (with slide arm) Order no. K-18351-00-0-*	3 AD-GS slide rail cover Order no. K-18364-00-0-*	4 FM mechanical hold-open device with ÖB*** Order no. K-18369-00-0-6	5 FE electromechanical hold-open device Order no. K-18368-00-0-6
					
6 AD-GS-FE cover for electromechanical hold-open device Order no. K-18365-00-0-*	7BS SRI door leaf coordinator Order no. K-18834-00-0-1	8 AD-SRI cover for door leaf coordinator Order no. K-18367-00-0-*	9 RSM smoke switch module Order no. K-19058-00-0-*	10 MP mounting plate** Order no. K-18280-00-0-0	11 ÖB Opening restrictor Order no. K-18916-00-0-6

Sets for 1-leaf solutions

<p>Door closer with GS slide rail</p>  <ul style="list-style-type: none"> 1B OTS 73x closer body 1A AD-OTS 73x 2 GS 	<ul style="list-style-type: none"> ■ OTS 733 set with GS K-19060-00-0-* ■ OTS 735 set with GS K-18360-00-0-* ■ OTS 736 set with GS K-18362-00-0-* <p>Option:</p> <ul style="list-style-type: none"> ■ 3 AD-GS K-18364-00-0-* ■ 4 FM K-18369-00-0-6 ■ 11 ÖB**** K-18916-00-0-6 ■ 10 MP K-18280-00-0-0 		<p>F Suitability for fire protection</p> <p>Complete modular system tested in accordance with</p> <ul style="list-style-type: none"> EN 1154 (door closer) EN 1158 (door leaf coordinator) EN 1155 (FE electromechanical hold-open device) <p>and approved for use with fire and smoke protection doors</p> <p>The closer type has to be selected depending on the required closing force size</p> <p>OTS 733 = EN 3 (door leaf width up to 950 mm) OTS 735 = EN 2-5 (door leaf width up to 1250 mm) OTS 736 = EN 3-6 (door leaf width up to 1400 mm)</p> <p>Abbreviations</p> <p>AD-OTS 73x Abdeckung Schließkörper („closer body cover“) AD-GS Abdeckung Gleitschiene („slide rail cover“) AD-GS-FE Abdeckung Feststellung, elektromechanisch („cover for electromechanical hold-open device“) AD-SRI Abdeckung Schließfolgeregler („cover for door leaf coordinator“) BG Bandgegenseite („side opposite to hinges“) BS Bandseite („hinge side“) FE Feststellung, elektromechanisch („hold-open, electromechanical“) FM Feststellung, mechanisch („hold-open, mechanical“) GS Gleitschiene („slide rail“) MP Montageplatte („mounting plate“) ÖB Öffnungsbegrenzung („opening restriction“) OTS Obentürschließer („overhead door closer“) RSM Rauchschaltmodul („smoke switch module“) SRI Schließfolgeregler, integriert („door leaf coordinator, integrated“)</p>
<p>Door closer without GS slide rail</p>  <ul style="list-style-type: none"> 1B OTS 73x closer body 1A AD-OTS 73x 	<ul style="list-style-type: none"> ■ OTS 733 set without GS K-18496-00-0-* ■ OTS 735 set without GS K-18498-00-0-* ■ OTS 736 set without GS K-18500-00-0-* <p>Option:</p> <ul style="list-style-type: none"> ■ 10 MP K-18280-00-0-0 		
<p>GS FE-OTS 73x slide rail</p>  <ul style="list-style-type: none"> 5 FE 2 GS 6 AD-GS-FE 	<ul style="list-style-type: none"> ■ GS FE-OTS 73x set K-18352-00-0-* 		
<p>GS FER-OTS 73x slide rail</p>  <ul style="list-style-type: none"> 5 FE 2 GS 6 AD-GS-FE 9 RSM 	<ul style="list-style-type: none"> ■ GS FER-OTS 73x set K-18353-00-0-* 		

Sets for 2-leaf solutions

<p>Door closer without GS slide rail</p>  <ul style="list-style-type: none"> 1B OTS 73x closer body 1A AD-OTS 73x 	<ul style="list-style-type: none"> ■ OTS 733 set without GS 2x K-18496-00-0-* ■ OTS 735 set without GS 2x K-18498-00-0-* ■ OTS 736 set without GS 2x K-18500-00-0-* <p>Option:</p> <ul style="list-style-type: none"> ■ 2x 10 MP 2x K-18280-00-0-0 	
<p>GS SRI-OTS 73x slide rail</p>  <ul style="list-style-type: none"> 2 2x GS 3 2x AD-GS 7BS SRI 8 AD-SRI 	<ul style="list-style-type: none"> ■ GS SRI-OTS 73x set K-18354-00-0-* <p>Option:</p> <ul style="list-style-type: none"> ■ 2x 4 FM 2x K-18369-00-0-6 ■ 2x 11 ÖB**** 2x K-18916-00-0-6 	
<p>GS FE-SRI-OTS 73x slide rail</p>  <ul style="list-style-type: none"> 2 2x GS 5 2x FE 6 2x AD-GS-FE 7BS SRI 8 AD-SRI 	<ul style="list-style-type: none"> ■ GS FE-SRI-OTS 73x set K-18355-00-0-* 	
<p>GS FER-SRI-OTS 73x slide rail</p>  <ul style="list-style-type: none"> 2 2x GS 5 2x FE 6 2x AD-GS-FE 7BS SRI 8 AD-SRI 9 RSM 	<ul style="list-style-type: none"> ■ GS FER-SRI-OTS 73x set K-18356-00-0-* 	

* Colour: silver (-1), black (-6), white RAL 9016 (-7), stainless steel (-8), special colour (-9)

** Required for use in fire and smoke protection doors

*** Not approved for fire and smoke protection doors

**** Not required if an FM (mechanical hold-open) exists

Components shown in grey are optional and have to be ordered separately

With 2-leaf doors it may be necessary to use a carrier bar

The modular series of OTS 73x door closers with slide rail

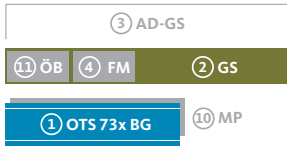
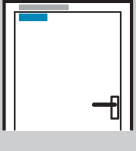
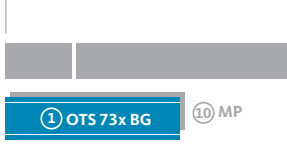
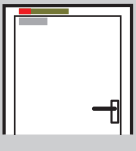
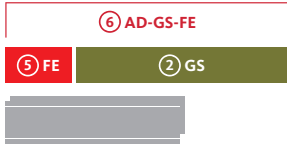
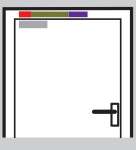
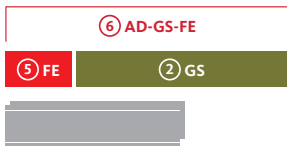
Side opposite to hinges



Modular components

					
1A AD-OTS 73x cover Order no. K-18338-00-0-*	1B OTS 73x BG door closer body OTS 733 BG – Order no. K-18342-00-0-1 OTS 735 BG – Order no. K-18344-00-0-1 OTS 736 BG – Order no. K-18346-00-0-1	2 GS slide rail (with slide arm) Order no. K-18351-00-0-*	3 AD-GS slide rail cover Order no. K-18364-00-0-*	4 FM mechanical hold-open device with ÖB*** Order no. K-18369-00-0-6	5 FE electromechanical hold-open device Order no. K-18368-00-0-6
					
6 AD-GS-FE cover for electromechanical hold-open device Order no. K-18365-00-0-*	7BG SRI-BG door leaf coordinator Order no. K-18835-00-0-1	8 AD-SRI cover for door leaf coordinator Order no. K-18367-00-0-*	9 RSM smoke switch module Order no. K-19058-00-0-*	10 MP mounting plate** Order no. K-18280-00-0-0	11 ÖB Opening restrictor Order no. K-18916-00-0-6

Sets for 1-leaf solutions

	<ul style="list-style-type: none"> 1B OTS 73x BG door closer body 1A AD-OTS 73x 2 GS 	<ul style="list-style-type: none"> ■ OTS 733 BG set with GS K-19059-00-0-* ■ OTS 735 BG set with GS K-18361-00-0-* ■ OTS 736 BG set with GS K-18363-00-0-* <p>Option:</p> <ul style="list-style-type: none"> ■ 3 AD-GS K-18364-00-0-* ■ 4 FM K-18369-00-0-6 ■ 11 ÖB**** K-18916-00-0-6 ■ 10 MP K-18280-00-0-0 	
	<ul style="list-style-type: none"> 1B OTS 73x BG door closer body 1A AD-OTS 73x 	<ul style="list-style-type: none"> ■ OTS 733 BG set without GS K-18497-00-0-* ■ OTS 735 BG set without GS K-18499-00-0-* ■ OTS 736 BG set without GS K-18501-00-0-* <p>Option:</p> <ul style="list-style-type: none"> ■ 10 MP K-18280-00-0-0 	
	<ul style="list-style-type: none"> 5 FE 2 GS 6 AD-GS-FE 	<ul style="list-style-type: none"> ■ GS FE-OTS 73x set K-18352-00-0-* 	
	<ul style="list-style-type: none"> 5 FE 2 GS 6 AD-GS-FE 9 RSM 	<ul style="list-style-type: none"> ■ GS FER-OTS 73x set K-18353-00-0-* 	

F Suitability for fire protection

Complete modular system tested in accordance with

- EN 1154 (door closer)
- EN 1158 (door leaf coordinator)
- EN 1155 (FE electromechanical hold-open device)

and approved for use with fire and smoke protection doors

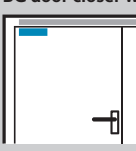

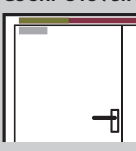

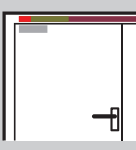

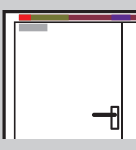

The closer type has to be selected depending on the required closing force size

OTS 733 = EN 3 (door leaf width up to 950 mm)
 OTS 735 = EN 2-5 (door leaf width up to 1250 mm)
 OTS 736 = EN 3-6 (door leaf width up to 1400 mm)

Abbreviations

AD-OTS 73x	Abdeckung Schließkörper („closer body cover“)
AD-GS	Abdeckung Gleitschiene („slide rail cover“)
AD-GS-FE	Abdeckung Feststellung, elektromechanisch („cover for electromechanical hold-open device“)
AD-SRI	Abdeckung Schließfolgeregler („cover for door leaf coordinator“)
BG	Bandgegenseite („side opposite to hinges“)
BS	Bandseite („hinge side“)
FE	Feststellung, elektromechanisch („hold-open, electromechanical“)
FM	Feststellung, mechanisch („hold-open, mechanical“)
GS	Gleitschiene („slide rail“)
MP	Montageplatte („mounting plate“)
ÖB	Öffnungsbegrenzung („opening restriction“)
OTS	Obertürschließer („overhead door closer“)
RSM	Rauchschtmodul („smoke switch module“)
SRI-BG	Schließfolgeregler integriert, Bandgegenseite („integrated door leaf coordinator, side opposite to hinges“)

Sets for 2-leaf solutions

	<ul style="list-style-type: none"> 1B OTS 73x BG door closer body 1A AD-OTS 73x 	<ul style="list-style-type: none"> ■ OTS 733 BG set without GS 2x K-18497-00-0-* ■ OTS 735 BG set without GS 2x K-18499-00-0-* ■ OTS 736 BG set without GS 2x K-18501-00-0-* <p>Option:</p> <ul style="list-style-type: none"> ■ 2x 10 MP 2x K-18280-00-0-0 	
	<ul style="list-style-type: none"> 2 GS 2 AD-GS 7BG SRI-BG 8 AD-SRI 	<ul style="list-style-type: none"> ■ GS SRI-OTS 73x BG set K-18357-00-0-* <p>Option:</p> <ul style="list-style-type: none"> ■ 2x 4 FM 2x K-18369-00-0-6 ■ 2x 11 ÖB**** 2x K-18916-00-0-6 	
	<ul style="list-style-type: none"> 2 GS 2 FE 2 AD-GS-FE 7BG SRI-BG 8 AD-SRI 	<ul style="list-style-type: none"> ■ GS FE-SRI-OTS 73x BG set K-18358-00-0-* 	
	<ul style="list-style-type: none"> 2 GS 2 FE 2 AD-GS-FE 7BG SRI-BG 8 AD-SRI 9 RSM 	<ul style="list-style-type: none"> ■ GS FER-SRI-OTS 73x BG set K-18359-00-0-* 	

* Colour: silver (-1), black (-6), white RAL 9016 (-7), stainless steel (-8), special colour (-9)
 ** Required for use in fire and smoke protection doors
 *** Not approved for fire and smoke protection doors
 **** Not required if an FM (mechanical hold-open) exists

Components shown in grey are optional and have to be ordered separately
 With 2-leaf doors it may be necessary to use a carrier bar